

Industrially Slip Decorated Wares: Banded

KEY

P	<i>Complete profile</i>
L	<i>Large</i>
S	<i>Small</i>
Context	<i>Context or contexts from which the ceramic material was recovered</i>
HMV.	<i>Unique High Morlaggan vessel number</i>

Photographs of complete vessels used for comparative purposes have been given identifiable letters beginning with 'A'.

(HMV. 17) (includes ten shards from context 021)

Context	Shards	Form	Rim Dia - Base Dia - Height	Decoration	Illus No
G. 1	17	Bowl. P	197mm - 100mm - 87mm	Banded	17



Seventeen standard white earthenware shards conjoining to form a substantial fragment of a hemispherical bowl, decorated with blue and black banding. Third quarter of the 19th century.

(HMV. 18)

Context	Shards	Form	Rim Dia - Base Dia - Height	Decoration	Illus No
G. 1	6	Bowl	145mm - ??? - 87mm	Banded	18



Six standard white earthenware shards conjoining to form two fragments of a bowl decorated with flow blue banding. Late Victorian

(HMV. 19)

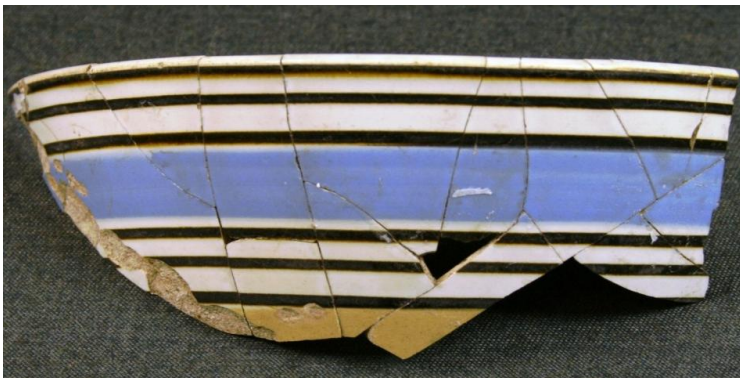
Context	Shards	Form	Rim Dia - Base Dia - Height	Decoration	Illus No
G. 1	14	Bowl. P	150mm – 71mm – 85mm	Banded	19



Fourteen standard white earthenware shards conjoining to form a large fragment of a stained hemispherical bowl decorated with a thin horizontal red band on the exterior and another on the rim. Late Victorian, or perhaps early 20th century

(HMV. 20) (includes three shards from context 021)

Context	Shards	Form	Rim Dia - Base Dia - Height	Decoration	Illus No
G. 1	18	Bowl	?	Banded	20



Eighteen standard white earthenware shards with thirteen, and three, conjoining to form two fragments of a thinly potted bowl, decorated on the exterior with blue, tan, and dark brown banding. Third quarter of the 19th century

(HMV.21) (021 seven shards & 006 two shards) (c. 1820)

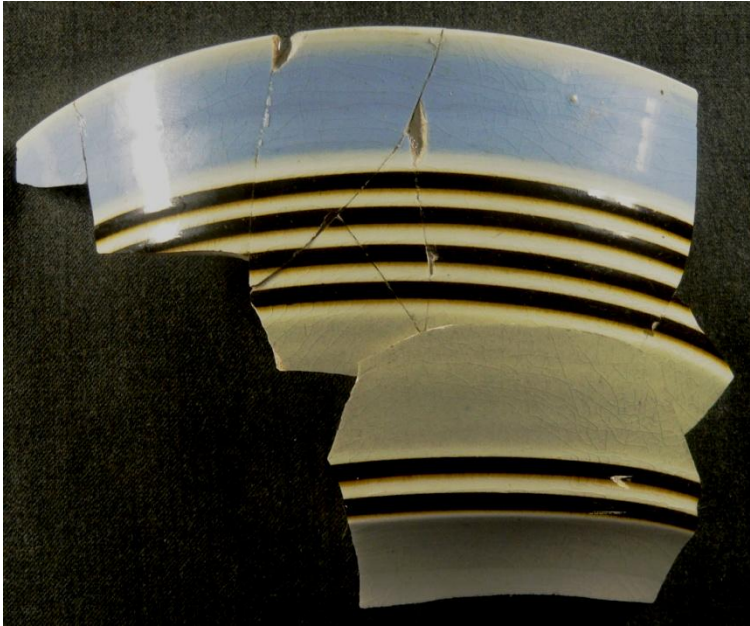
Context	Shards	Form	Rim Dia - Base Dia - Height	Decoration	Illus No
021 & 006	9	Bowl	?	Banded	21



Nine pearl-glazed shards from a thinly potted London shaped bowl decorated on the exterior with dark brown, blue, and light brown speckled bands. Third quarter of the 19th century

(HMV. 165)

Context	Shards	Form	Rim Dia - Base Dia - Height	Decoration	Illus No
021	20	Bowl	198mm -	Banded	165



Twenty pearlware shards, with seven conjoining, from a bowl decorated with brown, blue, and light green, banding. Third quarter of the 19th century

(HMV. 166)

Context	Shards	Form	Rim Dia - Base Dia - Height	Decoration	Illus No
G. 1	8	Bowls		Banded	166



Eight pearlware shards with two conjoining from six different bowls; all show evidence of rouletting. These shards may date from the first quarter of the 19th century and some appear to have frost damage.

(HMV. 167)

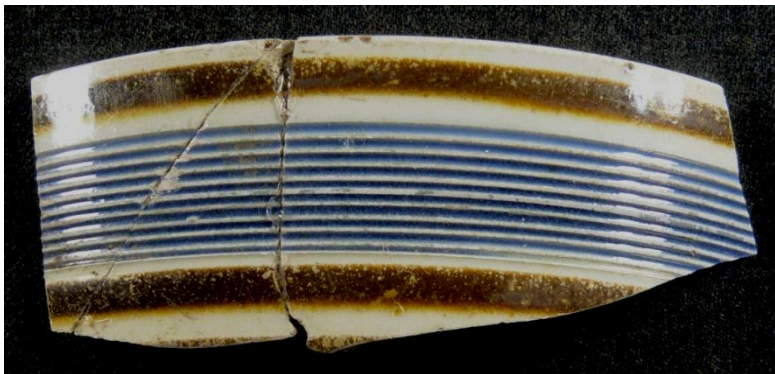
Context	Shards	Form	Rim Dia - Base Dia - Height	Decoration	Illus No
G. 1	14	Bowls		Banded	167



Fourteen pearlware shards, with two and two conjoining, from what could be ten to twelve different bowls, all showing signs of banding, dipped, worm, and cats eye decoration. These shards all date from the first half of the 19th century. Some show evidence of frost damage.

(HMV. 168)

Context	Shards	Form	Rim Dia - Base Dia - Height	Decoration	Illus No
006	3	Bowl		Banded	168



Three conjoining pearlware rim shards from a bowl decorated with lathe cutting under blue and brown banding.