

Bone China

KEY

P	<i>Complete profile</i>
L	<i>Large</i>
S	<i>Small</i>
Context	<i>Context or contexts from which the ceramic material was recovered</i>
HMV.	<i>Unique High Morlaggan vessel number</i>

Photographs of complete vessels used for comparative purposes have been given identifiable letters beginning with 'A'.

(HMV. 41) (Includes 6 shards from context 006: 4 from 059: 3 from 021 and 8 from 078)

Context	Shards	Form	C - Dia -- Height & S - Dia	Pattern name	Illus No
G.1	38	Saucer			41



Thirty eight bone china shards; a number conjoining from what appear to be a number (possibly 4), saucers, all decorated with simple, fine gilt, banding.

(HMV. 42) (Includes 3 shards from 021)

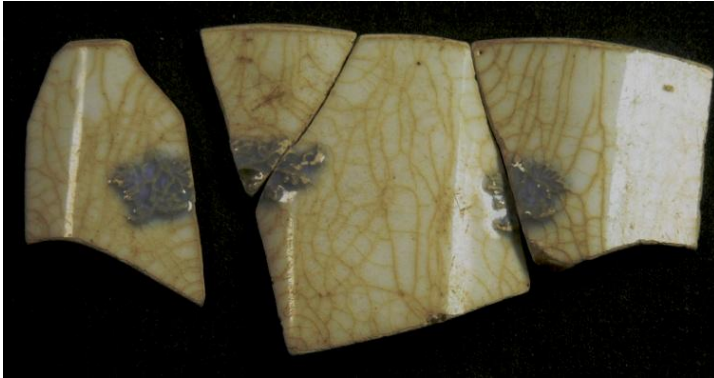
Context	Shards	Form	C - Dia -- Height & S - Dia	Pattern name	Illus No
G1	14	Saucer			42



Fourteen bone china shards, of which several conjoin, from a moulded saucer decorated with simple, fine, green lines.

(HMV. 159) (Includes one shard from contexts G.1)

Context	Shards	Form	Rim diameter	Decoration	Illus No
006	4	Bowl. S		Sprigged	159



Four bone china shards, probably from a small faceted moulded bowl decorated with small violet coloured sprigs.

(HMV. 160)

Context	Shards	Form	Rim diameter	Decoration	Illus No
G. 1	5	Saucer		Sprigged	160



Five bone china rim shards from a saucer decorated with small violet coloured sprigs.

(HMV. 161) (Includes one shard from context 038)

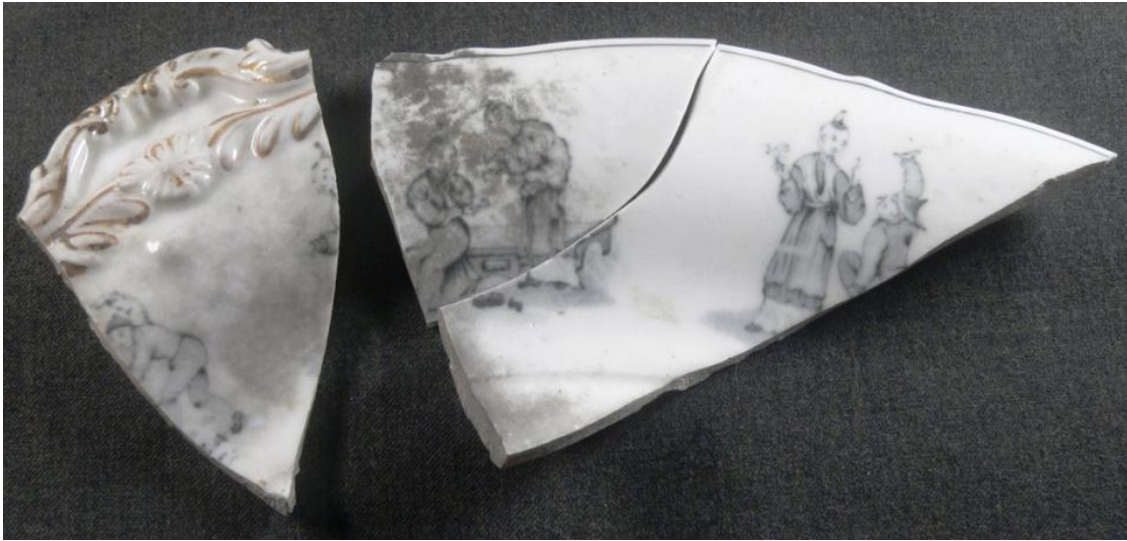
Context	Shards	Form	Rim diameter	Decoration	Illus No
G. 1	4	saucers		Sprigged	161



Four bone china rim shards from a saucer, or saucers, decorated with small violet coloured sprigs.

(HMV 164)

Context	Shards	Form	Rim Diameters	Decoration	Illus No
Cave	5	Dish. L		Transfer Printed	164



Five rim shards, of which two conjoin, from a bone china moulded dish decorated on both its interior and exterior with transfer prints of Chinese figures. Gilded highlighting to the moulded handle