

## Cane Coloured Ware

### KEY

<b>P</b>	<i>Complete profile</i>
<b>L</b>	<i>Large</i>
<b>S</b>	<i>Small</i>
<b>Context</b>	<i>Context from which the material was recovered</i>
<b>MOR II</b>	<i>Site Code</i>
<b>HMV</b>	<i>Unique Kilmartin Museum acquisition number</i>

*Photographs of complete vessels used for comparative purposes have been given identifiable letters beginning with 'A'.*

**(HMV 126) Includes three shards from context 021)**

Context	Shards	Form	Rim Diameters	Decoration	Illus No
G. 1	13	Bowl		Mocha & banding	126



Thirteen shards of which with six, and two, conjoin, from a hemispherical bowl in cane coloured earthenware. The bowl has been decorated with a band of white slip on the exterior of the rounded rim. Below this a broad band of white slip on which has been scratched

blue mocha decoration.

**(HMV 127) Includes three shards from context 021)**

Context	Shards	Form	Rim Diameters	Decoration	Illus No
006	3	Bowl		Mocha & banding	127



Three shards, two conjoining, from a bowl in cane coloured earthenware and with straight outward sloping sides. It has been decorated with a broad band of white slip and scratched blue mocha decoration.

(HMV 128) Includes three shards from context 059)

Context	Shards	Form	Rim Diameters	Decoration	Illus No
G. 1	11	Bowl		Mocha & banding	128



Eleven shards from a hemispherical bowl, or bowls, in cane coloured earthenware. The vessel has been decorated on its exterior with two thin bands of light blue slip; between these is a broad band of white slip

on which has been scratched blue mocha decoration.

(HMV 129) Includes two shards from context 059)

Context	Shards	Form	Rim Diameters	Decoration	Illus No
G. 1	8	Bowl		Mocha & banding	129



Eight shards from a London shaped bowl or bowls in cane coloured earthenware. The vessel has been decorated on its exterior with a thin band of brown slip below which is a broad band of white blue, dropped mocha, decoration.

**(HMV 130)**

Context	Shards	Form	Rim Diameters	Decoration	Illus No
038	1	Bowl			130



One glazed cane coloured earthenware rim shard from a small, straight sided, jar with a string lip.

**(HMV 131) (Includes three shards from context 039)**

Context	Shards	Form	Rim Diameters	Decoration	Illus No
G. 1	8	Bowl			131



Eight glazed caneware rim and body shards; three conjoining, from a bowl with a rounded rim and expanded foot.

**(HMV 132) (Includes two shards from context G.1)**

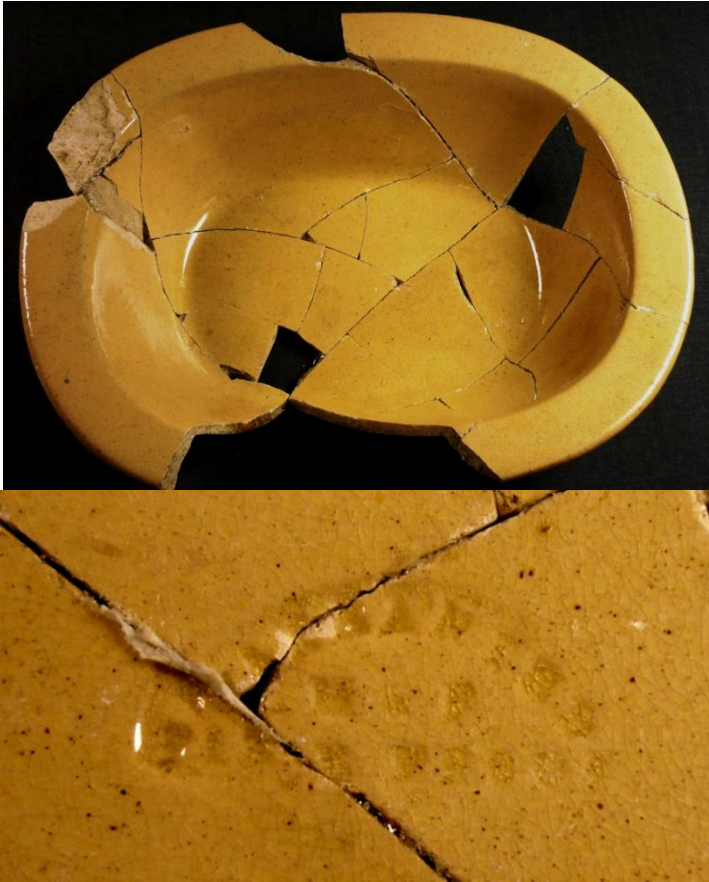
Context	Shards	Form	Rim Diameters	Decoration	Illus No
038	9	Bowl			132



Nine glazed caneware shards with four, and two, conjoining from a thinly potted bell shaped bowl. Several other shards in context 038 could be from the same bowl.

(HMV 132) (Includes 4 shards from context 006: 2 from 021: 3 from 038: 2 from 059 & 1 from 002).

Context	Shards	Form	Rim Diameters	Decoration	Illus No
G. 1	22	Pie-dish	240 x 182mm		130 a & b



Twenty two glazed caneware shards most of which conjoin to form a large fragment of a pie dish 65mm high. with an impressed mark on the base, see (illus 130b) below.

I read this as (WARENTED / M & P / FIRE PROOF).

Shards of this vessel were found in other contexts, but the piece of paper with my tally is missing.

(HMV 141) (Includes two shards from context 031 the rest from G.1))

Context	Shards	Form	Rim Diameters	Decoration	Illus No
006	49	Bowl		Banded	141



Forty nine thick shards, with a large number conjoining, to form three large fragments of a bowl in a hard fired cane coloured body.

The hemispherical bowl has been decorated with bands of white and dark brown, slip.