

Medieval & Post Medieval Earthenwares

KEY

P	<i>Complete profile</i>
L	<i>Large</i>
S	<i>Small</i>
Context	<i>Context from which the material was recovered</i>
MOR II	<i>Site Code</i>
HMV	<i>Unique Kilmartin Museum acquisition number</i>

Photographs of complete vessels used for comparative purposes have been given identifiable letters beginning with 'A'.

(HMV 181)

Context	Shards	Form	Rim Diameters	Decoration	Illus No
194	1	Jug?			181

One small slightly abraded shard in a fine sandy paste in what looks Scottish post medieval reduced ware. Very hard to date, but possibly 17th century

(HMV 182)

Context	Shards	Form	Rim Diameters	Decoration	Illus No
039	2	Jug			182



Two small very slightly abraded shards of what appears to be Scottish post medieval oxidised ware. The fabric is smooth with abundant fine mica; extremely difficult to date, possibly 16th century.

(HMV 183)

Context	Shards	Form	Rim Diameters	Decoration	Illus No
075	4	Jugs. L		incised	183



Four very badly abraded shards of what appears to be Scottish post medieval oxidised wares. The fabric is smooth with abundant fine mica; extremely difficult to date, possibly 17th century. One shard shows evidence of incised decoration similar to that seen on the shoulders of many Scottish post medieval reduced ware jugs.

(HMV 184)

Context	Shards	Form	Rim Diameters	Decoration	Illus No
135	1				

One small rim shard from a jar/cooking pot with lid seating, lead glazed on the exterior and over the rim. The fabric is a well fired late medieval sandy redware containing abundant fine mica c 1450-1500; the fabric is slightly reduced and is similar to 183 below.

(HMV 185)

Context	Shards	Form	Rim Diameters	Decoration	Illus No
066	2				

Two small conjoining lead glazed shards from a well fired late medieval sandy, redware vessel (jug?), containing abundant fine mica c 1450-1500; Similar fabric to 183 above.

(HMV 186)

Context	Shards	Form	Rim Diameters	Decoration	Illus No
037	1	Jug?			

One small badly abraded glazed body shard in a fine sandy paste in what would seem to be Scottish post medieval reduced ware. Extremely difficult to date, but possibly 17th century

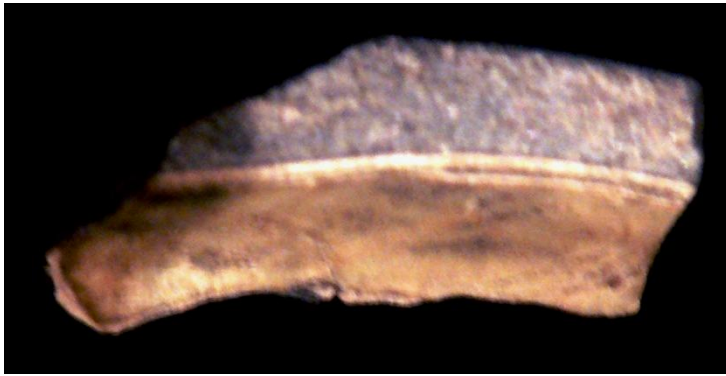
(HMV 187)

Context	Shards	Form	Rim Diameters	Decoration	Illus No
039	2	Jug		Incised	

Two small badly abraded shards; one Scottish post medieval oxidised ware and one from the shoulder of a Scottish post medieval reduced ware jug. The fabric is smooth with abundant fine mica. Extremely difficult to date, possibly 16th century, but could be 17th century

(HMV 188)

Context	Shards	Form	Rim Diameters	Decoration	Illus No
039	2	Jug		Incised	188



One shard from what appears to be a heavily reduced paste, with abundant fine mica. It is covered on its interior with whit looks like a lead glaze over a white slip. Post medieval or industrial?

(HMV 189)

Context	Shards	Form	Rim Diameters	Decoration	Illus No
021	1				

One small lead glazed body shard in a fine sandy paste; extremely difficult to date, possibly 16th century, but could be c 1450-1500.

(HMV xx)

Context	Shards	Form	Rim Diameters	Decoration	Illus No
?	1	Jar/cooking pot			xx



Derek Hall and the author when visiting High Morlaggan were shown a small rim shard from a medieval jar/cooking pot, which we suggested was probably of 14th century date. This shard has been mislaid, but a photograph taken, (see left), shows it to have a sandy fabric.