

Hand painted

KEY

P	<i>Complete profile</i>
L	<i>Large</i>
S	<i>Small</i>
Context	<i>Context from which the material was recovered</i>
MOR II	<i>Site Code</i>
HMV	<i>Unique Kilmartin Museum acquisition number</i>

Photographs of complete vessels used for comparative purposes have been given identifiable letters beginning with 'A'.

(HMV 190)

Context	Shards	Form	Rim Diameters	Decoration	Illus No
038	1	Bowl		Hand Painting	190



One small rim shard from a pearlware bowl hand painted in cobalt blue. This shard almost certainly dates from between 1790-1820.

(HMV 191)

Context	Shards	Form	Rim Diameters	Decoration	Illus No
006	5	Bowl		Hand Painting	191



Five conjoining rim shards from a small pearlware bowl with a flower and leaves hand painted in Pratt colours of green, blue and black; a painted brown band sits below the interior rim.

(HMV 192)

Context	Shards	Form	Rim Diameters	Decoration	Illus No
G. 1	5	Bowl		Hand Painting	192



Five standard white earthenware shards, with two conjoining, from a Victorian period bowl painted in polychrome; red, green, and maroon, with a cut sponged blue flower over the polychrome decoration.

(HMV 193)

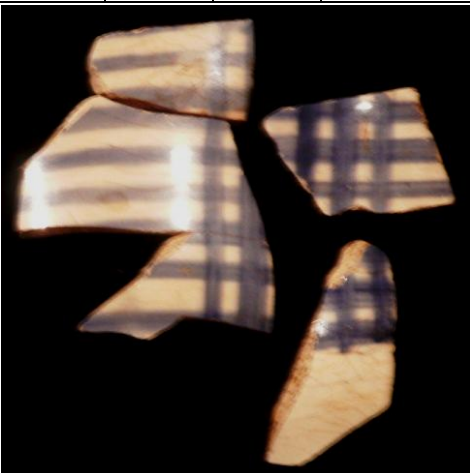
Context	Shards	Form	Rim Diameters	Decoration	Illus No
G. 1	9	Bowl		Hand Painting	193



Nine standard white earthenware shards, two conjoining, from a thinly potted bowl. It has been decorated with polychrome painting, red, green, and light brown. Second quarter of the 19th century

(HMV 194)

Context	Shards	Form	Rim Diameters	Decoration	Illus No
G. 1	5	Bowl		Hand Painting	194



Five standard white earthenware shards, two conjoining, from a Victorian period bowl with painted decoration of horizontal and vertical pale blue bands (quasi tartan).

(HMV 195)

Context	Shards	Form	Rim Diameters	Decoration	Illus No
021	4	Porringer		Hand Painting	195



Four standard white earthenware shards, three conjoining, from the rim and shoulder of a late porringer decorated painted horizontal red band, swags, and stylized flowers painted in black, red, green, and a

blue wash.

(HMV 196) (Includes shards from contexts 006; 021; 038; 005 & 002)

Context	Shards	Form	Rim Diameters	Decoration	Illus No
G. 1	58	Various		Hand Painting	196



Fifty eight, mostly standard white earthenware shards, from a large number of vessels; as many as twenty shards may conjoin. All are decorated with various types of hand painting. These in the main small shards cover most of the 19th century but the majority are post 1850.