

Red Earthenware; Tile

KEY

P	<i>Complete profile</i>
L	<i>Large</i>
S	<i>Small</i>
Context	<i>Context from which the material was recovered</i>
MOR II	<i>Site Code</i>
HMV	<i>Unique Kilmartin Museum acquisition number</i>

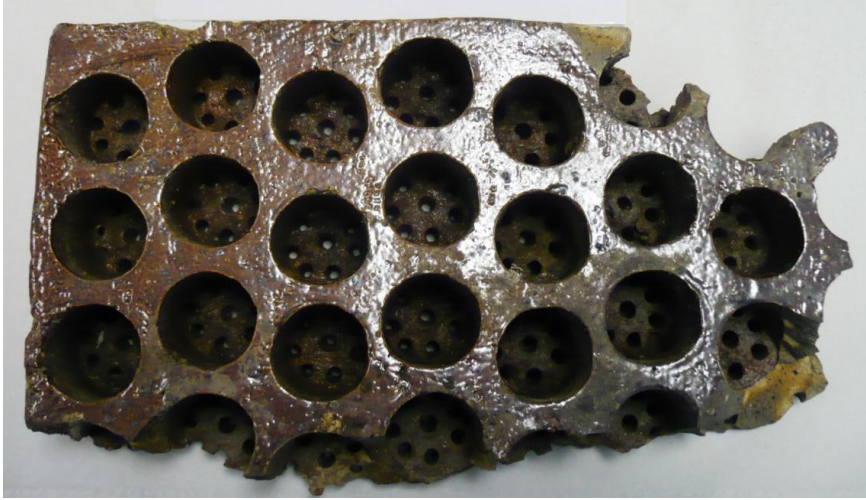
Photographs of complete vessels used for comparative purposes have been given identifiable letters beginning with 'A'.

(HMV 125)

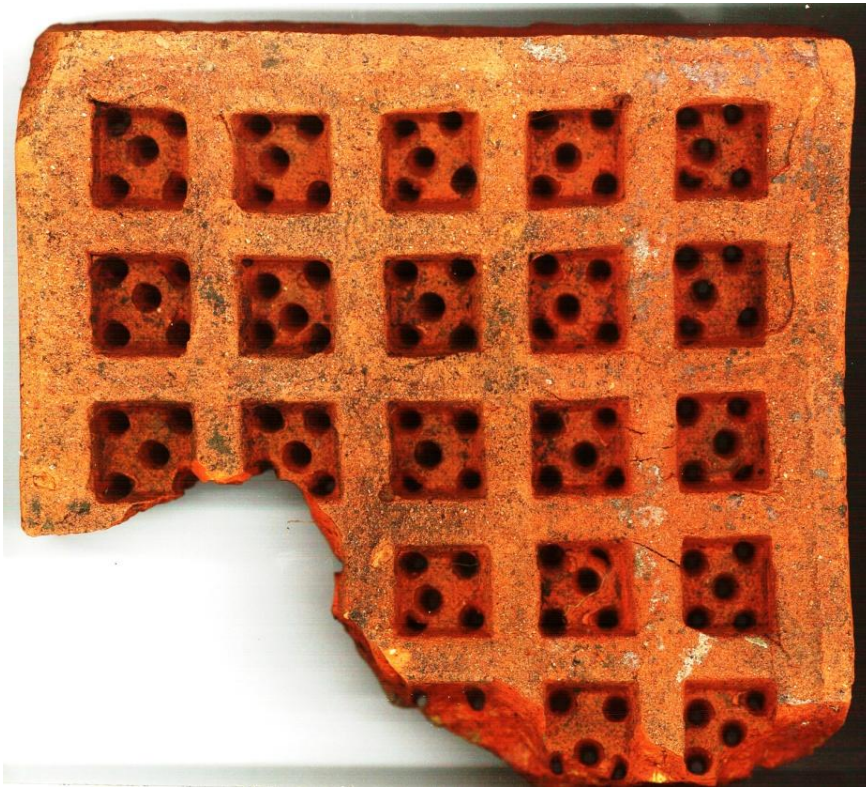
Context	Shards	Form	Size	Decoration	Illus No
050	1	Tile	124 x 83 x 24mm		125



One abraded shard from a moulded and pierced red earthenware tile. In the past I have seen only bits of two similar tiles, one in salt-glazed stoneware, from an 18th century site in Leeds. See (**illus B**) below. The second shard, similar to the Morlaggan example, is also in red earthenware; this was recovered during archaeological excavations carried out by AOC Archaeology on the site of an 18th century pottery in the Glasgow Gallowgate. See (**illus C**) below. The piercing on both the Morlaggan and Gallogate examples has been carried out while the tile was in a green state, using a type of five pointed tool. Although controversial, I suggest that these tiles were used as flooring in grain drying kilns.



Courtesy of the
AOC
Archaeology
Group (**illus B**)



Courtesy of the
AOC
Archaeology
Group (**illus C**)