

Sprigged Earthenware

KEY

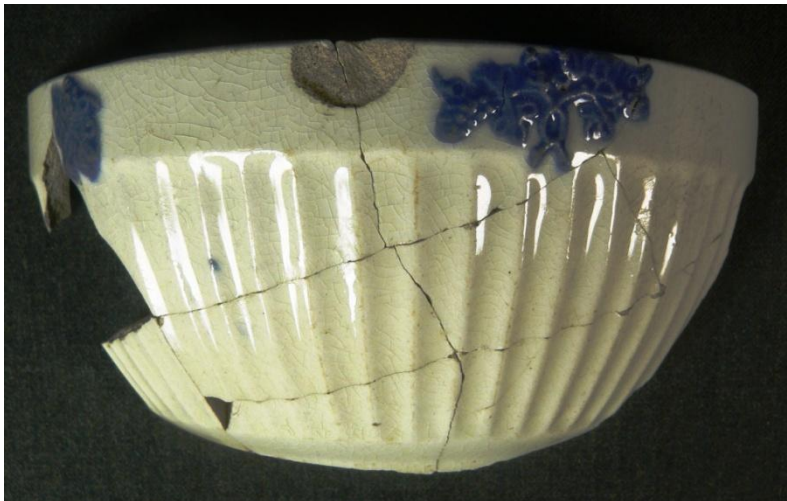
P	<i>Complete profile</i>
L	<i>Large</i>
S	<i>Small</i>
Context	<i>Context from which the material was recovered</i>
MOR II	<i>Site Code</i>
HMV	<i>Unique Kilmartin Museum acquisition number</i>

Photographs of complete vessels used for comparative purposes have been given identifiable letters beginning with 'A'.

For more sprigged wares, see word file 2; Bone China

(HMV. 169)

Context	Shards	Form	Rim Diameters	Decoration	Illus No
G. 1	12	Bowl	150mm	Sprigged	169



Twelve standard white earthenware shards, seven conjoining, from a round fluted bowl decorated with two different, spaced, blue sprigs below the rim.

(HMV. 170)

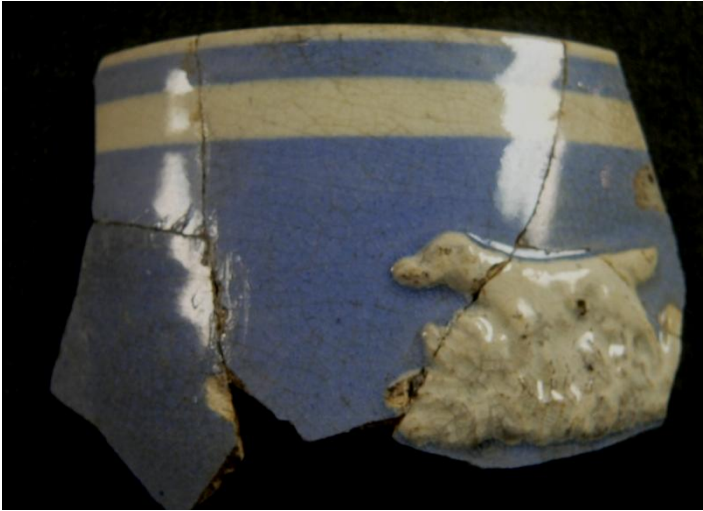
Context	Shards	Form	Rim Diameters	Decoration	Illus No
G. 1	13	Saucer		Sprigged	170



Thirteen standard white earthenware shards from a saucer; decorated with spaced blue sprigs similar to the example illustrated above.

(HMV. 171) (Includes 2 shards from context 002)

Context	Shards	Form	Rim Diameters	Decoration	Illus No
006	5	?		Sprigged	171



Five standard white earthenware shards, conjoining, to form a fragment from a blue banded vessel of unknown form, but possibly a jug, decorated with a sprig of a dog.