

## Transfer Printed: Jugs

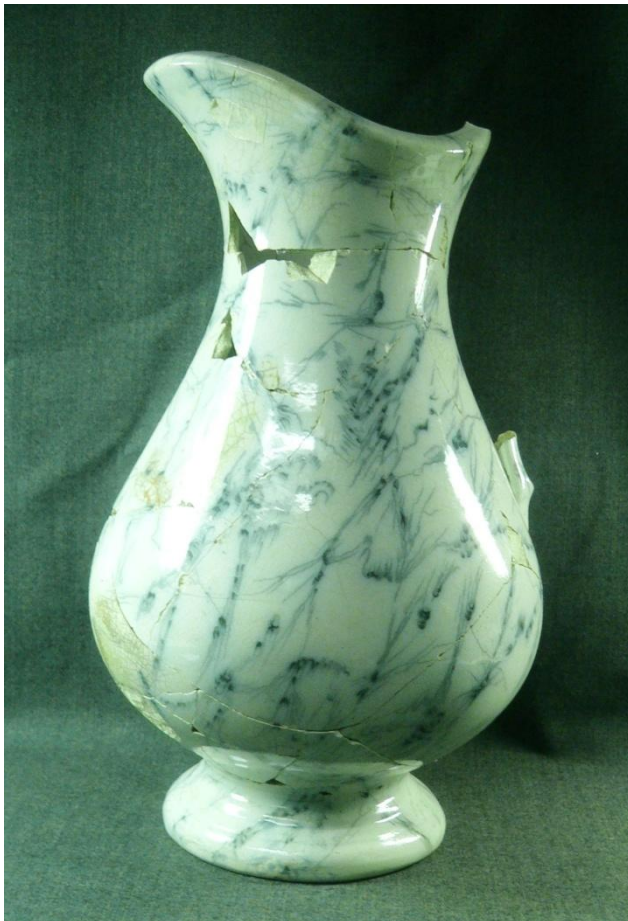
### KEY

|                |  |
|----------------|--|
| <b>P</b>       | <i>Complete profile</i>                              |
| <b>L</b>       | <i>Large</i>   |
| <b>S</b>       | <i>Small</i>   |
| <b>Context</b> | <i>Context from which the material was recovered</i> |
| <b>MOR II</b>  | <i>Site Code</i>                                     |
| <b>HMV</b>     | <i>Unique Kilmartin Museum acquisition number</i>    |

*Photographs of complete vessels used for comparative purposes have been given identifiable letters beginning with 'A'.*

(HMV. 49)

| Context | Shards | Form   | Base Dia - Rim Dia - Height | Decoration       | Illus No |
|---------|--------|--------|-----------------------------|------------------|----------|
| G. 1    | 40     | Jug. L | 123mm - - 324mm             | Transfer Printed | 49       |



Forty standard white earthenware shards which conjoin to form an almost complete, very large jug, decorated in what is known as the "Ice" pattern. This marble like pattern was produced by a number of potteries including Bells of Glasgow.

## (HMV. 51)

| Context | Shards | Form   | Base Dia - Rim Dia - Height | Decoration       | Illus No |
|---------|--------|--------|-----------------------------|------------------|----------|
| G. 1    | 62     | Jug. L |                             | Transfer Printed | 51       |



Sixty two standard white earthenware shards, with a large number conjoining, form several substantial fragments of a large jug, decorated with flow blue transfer prints.

## (HMV. 52)

| Context | Shards | Form | Base Dia - Rim Dia - Height | Decoration       | Illus No |
|---------|--------|------|-----------------------------|------------------|----------|
| G. 1    | 22     | Jug. |                             | Transfer Printed | 52       |



Twenty two, very low fired, standard white earthenware shards with nine, two, and two, conjoining to form fragments of a dark blue transfer printed jug.

## (HMV. 53)

| Context | Shards | Form   | Base Dia - Rim Dia - Height | Decoration       | Illus No |
|---------|--------|--------|-----------------------------|------------------|----------|
| G. 1    | 2      | Jug. L | 130mm -                     | Transfer Printed | 53       |



Two standard white earthenware shards from the rim and base of a large jug decorated with black transfer printing. The large base shard has a "SYDENHAM / J. T" backstamp. The "J.T." denotes John Thomson, owner of the Annfield pottery in Glasgow.



## (HMV. 206)

| Context | Shards | Form | Base Dia - Rim Dia - Height | Decoration       | Illus No |
|---------|--------|------|-----------------------------|------------------|----------|
| Cave    | 1      | Jug  | 130mm -                     | Transfer Printed | 206      |



One large, standard white earthenware, shard from a jug decorated with a brown transfer print.