

## Transfer Printed: Willow Patterns; Various

### KEY

<b>P</b>	<i>Complete profile</i>
<b>L</b>	<i>Large</i>
<b>S</b>	<i>Small</i>
<b>Context</b>	<i>Context from which the material was recovered</i>
<b>MOR II</b>	<i>Site Code</i>
<b>HMV</b>	<i>Unique Kilmartin Museum acquisition number</i>

*Photographs of complete vessels used for comparative purposes have been given identifiable letters beginning with 'A'.*

Willow in all variants was produced by hundreds of potteries over a long period of time and as such unless its marked generally adds little to the overall picture.

**(HMV. 133) (Includes 3 shards from context 021)**

Context	Shards	Form	Rim Diameter	Decoration	Illus No
G. 1	15	Plate	262mm	Transfer Printed	133 a, b & c



Thirteen standard white earthenware shards, conjoining, from a plate decorated with a light blue standard willow transfer print. The blue and white “J & M P Bells” of Glasgow backstamp (illus 133 b) is on the reverse. A number of other shards have fragments of this backstamp, implying a minimum of four plates (illus 133 c).



**(HMV. 134) (Includes 4 rim shards from context 078)**

Context	Shards	Form	Rim Dia	Decoration	Illus No
021	9	Plate.	230mm	Transfer Printed	134



Nine standard white earthenware shards, conjoining, from an unmarked soup plate decorated with a light blue standard willow transfer print; no Backstamp.

**(HMV. 135) (Includes contexts 021- 5; 006 - 1: 078 -1: 002 – 1)**

Context	Shards	Form	Rim Dia	Decoration	Illus No
G. 1	16	Plates. S		Transfer Printed	135 a & b



Sixteen standard white of earthenware shards with two only conjoining, from a minimum of 9 or 10 plates, all decorated with blue and white transfer prints. These are variations of the common “Two Temples” pattern with complete, or part, backstamps. The letters “J & M.P. Bell & Co.” sit below the small square “SEMI CHINA” blue and white backstamp. One shard (bottom left), has a small impressed divided circle, part of an impressed bell; two shards have large impressed oval garters with crowns and the word “ROYAL” (illus 135 b). This is completely different from the patterns previously registered for “Royal” (Kelly 1988, 61: Haggarty 2007, Folder



Earthenware White, Word File 94). A similar impressed shard was recovered from an excavation at the Broomielaw among material dumped from the Verreville pottery (Haggarty forthcoming 2012, Word File 14).

(HMV. 136)

Context	Shards	Form	Base Dia - Rim Dia - Height	Decoration	Illus No
G. 1	15	Plate		Transfer Printed	136



Fifteen standard white earthenware shards from an oval transfer printed plate decorated with standard willow. A blue and white floral, crown, and ribbon backstamp with "STONEWARE" "J. T.)" on its obverse which denotes the Annfield pottery of John Thomson, in Glasgow.



(HMV. 137)

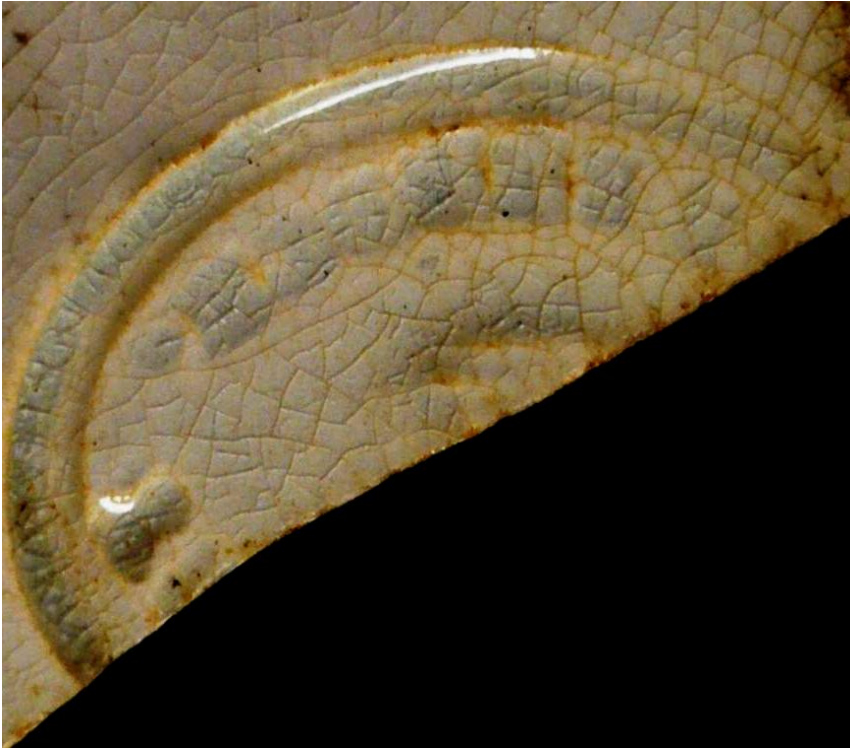
Context	Shards	Form	Base Dia - Rim Dia - Height	Decoration	Illus No
021	5	Salt		Transfer Printed	133



Five standard white earthenware shards with three conjoining to form the complete profile to a table salt, decorated with small blue transfer prints.

(HMV. 138)

Context	Shards	Form	Base Dia - Rim Dia - Height	Decoration	Illus No
078	1	Plate		Transfer Printed	138



One standard white earthenware shard from a small plate decorated with the blue and white “Two Temples” transfer print; part of an impressed oval with barely decipherable letters is on the obverse.